



**Bridge**  
Referrals

Orthopaedic Surgery  
Referral Estimates



# **\*\*NEW Pricing for Orthopaedic Procedures at Bridge Referrals\*\***

January 2025



**Bridge**  
Referrals



0191 580 8330



[referrals@bridgereferrals.co.uk](mailto:referrals@bridgereferrals.co.uk)



[bridgereferrals.co.uk](http://bridgereferrals.co.uk)

3 Brooklands Way,  
Boldon Business Park,  
Boldon Colliery,  
NE35 9LZ

## Consultation Fees

Orthopaedic Consult	£180.00
Urgent Orthopaedic Consult	£270.00

## Orthopaedic Estimates

Lameness Work Up A	£1,200.00
Includes: Consultation, General Anaesthetic, Radiographs (as many as required), Arthrocentesis (as many as required)	
Lameness Work up B - £1850	£1,850.00
Includes: Consultation, General Anaesthetic, Radiographs (as many as required), Arthrocentesis (as many as required), CT +/- contrast (as many areas as required)	

## Add ons after Lameness Workup

Arthroscopy unilateral	£1,500.00
Arthroscopy bilateral	£2,000.00
HIF Screw Unilateral	£1,500.00
HIF Screw Bilateral	£2,250.00
Arthrotomy	£1,500.00
Proximal Ulnar Osteotomy	£1,500.00
Angular limb correction	£2,500.00
Uni-lateral SI lux	£1,000.00
Bi-lateral SI lux	£1,500.00

## Set Fee Procedures

TPLO/CWTPLO	£3,700.00
Consultation, GA, Radiographs, Bloods, Arthrocentesis, Surgery, Hospitalisation, three weeks medication, one year complication cover*.	40kg+ £4200.00 60kg+ £4700.00
Lateral Suture	£2,500.00
Consultation, GA, Radiographs, Bloods, Arthrocentesis, Surgery, Hospitalisation, three weeks medication.	
Patella surgery	£3,000.00
Tibial Tuberosity transposition, sulcoplasty, medial and lateral joint imbrication - Consultation, GA, Radiographs, Bloods, Arthrocentesis, Surgery, Hospitalisation, three weeks medication, one year complication cover*.	

*\*For TPLO/CWTPLO and Patella surgeries we cover for surgical complications for 12 months as long as post operative instructions have been followed and the original bill has been paid in full.*

Pancarpal/Pantarsal Arthrodesis	£4,500.00
Consultation, GA, Radiographs, Bloods, Arthrocentesis, Surgery, Hospitalisation, three weeks medication, Post op radiographs at 8 weeks.	
Partial Carpal/tarsal arthrodesis	£4,000.00
Consultation, GA, Radiographs, Bloods, Arthrocentesis, Surgery, Hospitalisation, three weeks medication, Post op radiographs at 8 weeks.	
FHNE	£3,000.00
Consultation, GA, Radiographs, Bloods, Surgery, Hospitalisation, three weeks medication.	
Unicondylar Elbow Fracture	£4,000.00
Consultation, GA, Radiographs, Bloods, Surgery, Hospitalisation, three weeks medication, Post op radiographs at 6 weeks.	
Bicondylar Elbow Fractures	£5,000.00
Consultation, GA, Radiographs, Bloods, Surgery, Hospitalisation, three weeks medication, Post op radiographs at 6 weeks.	
Fracture Repair Basic (Pin and Wire)	£3,000.00



Consultation, GA, Radiographs, Bloods, Surgery, Hospitalisation, three weeks medication, Post op radiographs at 6 weeks.	
Fracture Repair Moderate (Pin and Plate)	£4,000.00
Consultation, GA, Bloods, Radiographs +/- CT, Surgery, Hospitalisation, three weeks medication, Post op radiographs at 6 weeks.	
Fracture Repair Major - Orthogonal Plates	£5,000.00
Consultation, GA, Bloods, Radiographs +/- CT, Surgery, Hospitalisation, three weeks medication, Post op radiographs at 6 weeks.	
Hip Toggle	£3,500.00
Consultation, GA, Bloods, Radiographs +/- CT, Surgery, Hospitalisation, three weeks medication, Post op radiographs at 6 weeks if needed.	

## Our Orthopaedic clinicians



**Emma Mace**

BVetMed CertAVP (GSAS)  
MRCVS  
  
RCVS Advanced  
Practitioner in Small Animal  
Surgery



**Jack Sillito**

BVMS PGCertSAS MRCVS  
  
RCVS Advanced  
Practitioner in Small Animal  
Surgery

## How to refer to Bridge Referrals

Referrals to our Orthopaedic team can be done online, via email or by phone:

<b>Online submission of referrals via our Referral Platform:</b>	<a href="#">Referral Platform</a>
<b>Email referrals:</b>	<a href="mailto:referrals@bridgereferrals.co.uk">referrals@bridgereferrals.co.uk</a>
<b>Telephone:</b>	0191 5808330

**We also offer a FREE advice service to our referring vets! This can be via the phone or by uploading case information to our Referral Platform**

## About Bridge Referrals

Bridge Referrals is privately owned and operated and is also a member of the Federation of Independent Veterinary Practices. The Bridge Referrals team has invested £3.6 million into the Referral Centre over the last 24 months.

Our multidisciplinary approach allows for collaboration between different disciplines and improves the quality of care enabling positive outcomes for complex cases.

The Referral Centre contains:

- 8 consult rooms
- Medicine and Cardiology facilities
- Chemotherapy and Electrochemotherapy facilities
- Diagnostic imaging facilities including x-ray, ultrasound, CT and travelling MRI
- Ophthalmology facilities with surgical microscopy and theatre
- Soft Tissue surgical facilities
- Orthopaedic surgical facilities
- Fluoroscopy, Arthroscopy and Endoscopy
- In-house laboratory testing cytology, microscopy, haematology, urinalysis, biochemistry (including drug monitoring), endocrine assays, infectious disease screening, blood gas and coagulations.

### Location:

Bridge Referrals is ideally located on the A19 at Boldon Colliery. With major road links to the whole region.

Bridge Referrals Ltd  
3 Brooklands Way  
Boldon Business Park  
Boldon Colliery  
NE35 9LZ



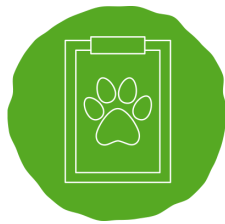
## Our services

Bridge Referrals also provides the following referral services:

- Soft Tissue Surgery
- Orthopaedic Surgery
- Cardiology
- Diagnostic Imaging
- Internal Medicine
- Neurosurgery
- Oncology
- Ophthalmology
- Physiotherapy



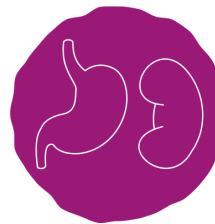
**CARDIOLOGY**



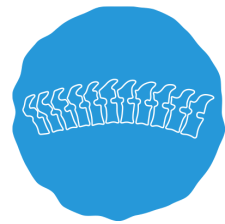
**CASE ADVICE**



**DIAGNOSTIC  
IMAGING**



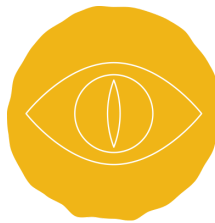
**INTERNAL  
MEDICINE**



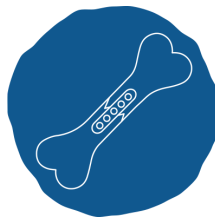
**NEUROSURGERY**



**ONCOLOGY**



**OPHTHALMOLOGY**



**ORTHOPAEDIC  
SURGERY**



**PHYSIOTHERAPY**



**SOFT TISSUE  
SURGERY**